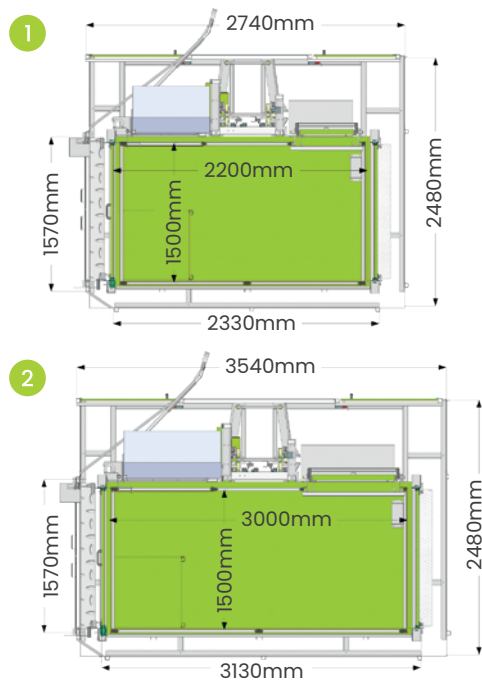


SPECIFICATIONS ELECTROELSA

	Elsa H20	Elsa H20 LPC
Capacity with Overload System	<div>1</div> x15 o/or 2000kg <div>2</div> x22 o/or 2000kg	<div>1</div> x15 o/or 2000kg <div>2</div> x22 o/or 2000kg
Lifting Speed	25-30m/min	25-40m/min (depending on the load)
Max Anchored Height	220m	220m
Internal Cage Dimensions	<div>1</div> 2.20m x 1.50m <div>2</div> 3.00m x 1.50m	<div>1</div> 2.20m x 1.50m <div>2</div> 3.00m x 1.50m
Input Power Range	230/400 V -50 Hz 275-480 V-60 Hz 3Ph	230/400 V -50 Hz 275-480 V-60Hz 3Ph
Protection Switch	36A	36A
Power of the Motors	2 x 7.5kW Variable depending on required speed	2 x 7.5kW Variable depending on required speed
Minimum Line Power Suggested	25kW	25kW
Rack Automatic Greasing Pump	Yes	Yes

Ramp Version



All information stated on this specification sheet comes from relevant professional engineers engaged for the purpose of compliance with appropriate regulations. SkyTech believes that all information stated on this specification sheet to be true and correct at the time of printing. SkyTech accepts no responsibility for its accuracy and recommends perusing your own sources for confirmation of stated details. Contact SkyTech directly for any further information regarding this product. All loads are static loads i.e. no load factors applied. Horizontal forces are not taken into account.

For more information, contact our team at office@skytechnz.co.nz

0508 skytech
skytechnz.co.nz

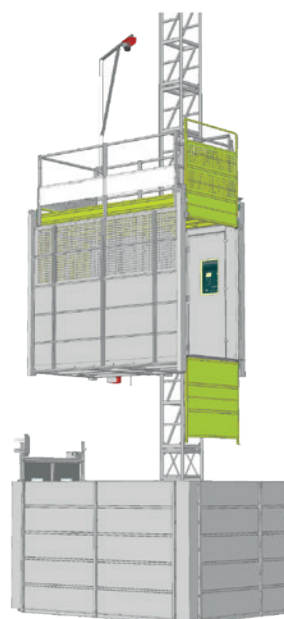
SKY HOIST ELECTROELSA

SPECIFICATIONS ELECTROELSA

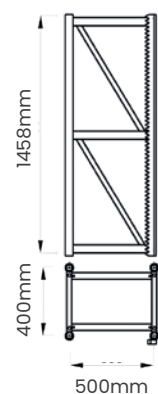
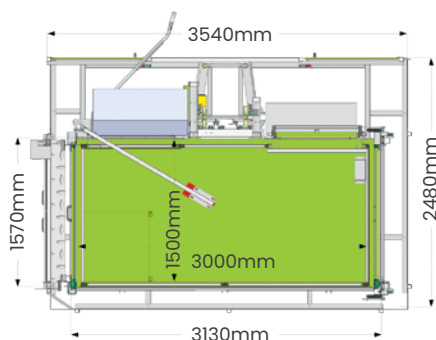
Height (m)	n° Mast Sections	F (daN)	P (daN/m²)
10	7	1279.9	
20	14	1305.8	
30	21	1470.3	
40	28	1689.4	
50	35	1908.5	
60**	42		3922
70	49		4209
80	55		4455
90	62		4742
100	69		5029
150	103		6423
200	138		7858

Special Features

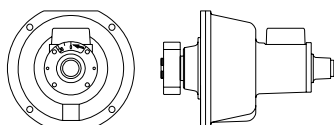
- Automatic control panel with Touch Screen and PLC
- Lifting speed from 25 to 40 m/min depending on transported load, automatically managed by inverter
- Biometric sensor for enabling the use of the unit
- Overload device



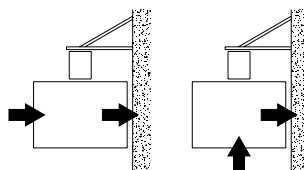
Splitted Door Version



INTERCHANGEABILITY:
EHPM/EHM 2500/10
EHPM/EHM 2500/15
ELSA PM-M 50
ELSA P40



OVERSPEED SAFETY
DEVICE WITH
PROGRESSIVE STOP



POSSIBLE ACCESS
CONFIGURATIONS



All information stated on this specification sheet comes from relevant professional engineers engaged for the purpose of compliance with appropriate regulations. SkyTech believes that all information stated on this specification sheet to be true and correct at the time of printing. SkyTech accepts no responsibility for its accuracy and recommends perusing your own sources for confirmation of stated details. Contact SkyTech directly for any further information regarding this product. All loads are static loads i.e. no load factors applied. Horizontal forces are not taken into account.

For more information, contact our team at office@skytechnz.co.nz

0508 skytech
skytechnz.co.nz

SKY ELECTROELSA HOIST